

# HORIZON RIVER VIEWS

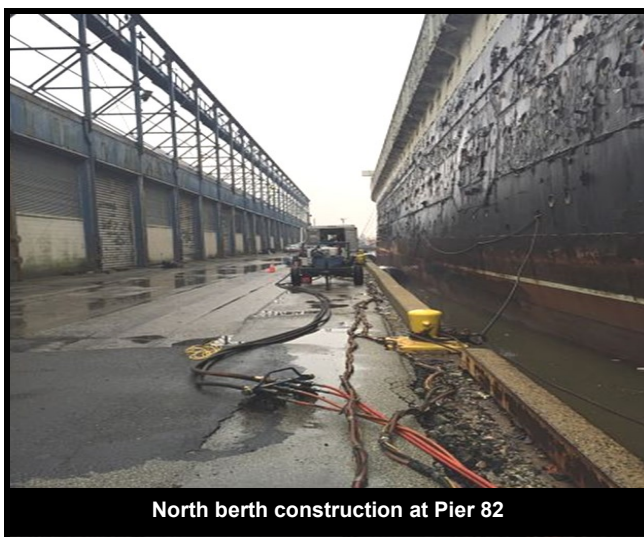


2201 South Columbus Boulevard  
Pier 82  
Philadelphia, PA 19148 USA  
Tel: 215 218 3080  
Fax: 215 218 3089  
[www.horizonstevedoring.com](http://www.horizonstevedoring.com)

## CONSTRUCTION PROJECT AT PIER 82

Atlantic Subsea, Inc. has just started construction at Horizon Stevedoring, Inc., Pier 82, to repair the underside hardware and timber piles along the north and south berths of the pier, as well as, the out shore marginal end. Pier 82's scope of work is part of a larger marine structure repair project that is focusing on Piers 80, 82, and 84.

S.T. Hudson, the engineering firm that designed the project, based the project on a pier assessment that was conducted by an architecture, engineering, consulting and operations company, AECOM in 2013. The total length of



North berth construction at Pier 82

the project will be about two and a half years, with about a year's worth of work being done at Pier 82. After the completion of

this project, the marine structures will be better equipped to handle the day-to-day loads during terminal operations.

### Articles:

Construction Project	1
Food Safety Audit	1
SS United States	2
Globally Harmonized System (GHS) Training	2
Team Member Spotlight	2
New Team Members & Fun Fact	3
Birthdays, Safety Tips & Save-The-Date	4
Contacts	4

**Information provided by John Lucas, Operations Field Representative, Philadelphia Regional Port Authority.**

## FOOD SAFETY AUDIT

On December 10, 2015, Joann Knoetgen, Warehouse Manager, Horizon Stevedoring, Inc. (HSI) and Phill Teng, Quality Control/Customer Service Coordinator, Turbana Corporation, accompanied PrimusLabs inspector Jill Skrupa as she performed an annual food safety au-

dit at HSI on behalf of Turbana Corporation.

PrimusLabs is a global leader in food safety and has been servicing the fresh produce industry for more than two decades. In today's marketplace, food safety verification and confidence are critical.

The food safety audit addressed general food safety, pest control, storage areas and packaging materials, operational practices, employee practices, equipment, equipment cleaning, general cleaning, buildings and grounds, standard operating procedures and traceability.

Turbana Corporation and HSI would like to thank the entire workforce at HSI for their continued focus on safety and quality all of which helped achieve a score of 95% out of 100% on this year's audit!!

## SS UNITED STATES - A NEW LEASE ON LIFE

The SS United States was a luxury passenger liner, built in 1952 for the United States Lines designed to capture the Trans-Atlantic speed record.

The SS United States was the fastest ocean liner to cross the Atlantic in either direction and operated uninterrupted in Trans-Atlantic passenger service until 1969.

The SS United States is over 100 feet longer than the Titanic. There was no wood allowed on the SS United States. Even the piano was made out of fire



SS United States docked at Pier 82 in Philadelphia

resistant material, which was tested by trying to light the piano on fire....it

would not burn.

The SS United States has been docked at Pier 82

since 1996 and may now get a new lease on life.

Crystal Cruises recently announced that it has signed a purchase option for the SS United States and will cover docking costs for nine months while conducting a feasibility study on returning the ship to service as a cruise ship based in New York City. If she passes this test, it will be on to a new life for this remarkable piece of history.

**Want to learn more go to:**  
[https://en.wikipedia.org/wiki/SS\\_United\\_States](https://en.wikipedia.org/wiki/SS_United_States)

## GLOBALLY HARMONIZED SYSTEM (GHS) TRAINING

On Thursday, March 10th, Sonny Pezzano of Cornerstone Safety Consulting conducted training for "Understanding GHS Hazard Communication" for team members of Horizon Stevedoring, Inc. GHS stands for Globally Harmonized System of Classification and Labeling of Chemicals and provides agreed criteria for the classification of chemical hazards. It is a standardized approach to label elements and safety



GHS Employee Training

data sheets.

The training sessions presented information on hazard communication and pre and post GHS. The training showed how the adoption of this system will reduce confusion about chemical hazards in the workplace through the use of signal words, pictograms, hazard statements, and precautionary statements.

## TEAM MEMBER SPOTLIGHT - KYLE BAGNELL



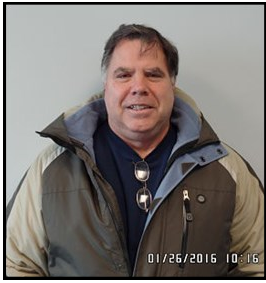
**Kyle Bagnell**  
 Warehouse/Vessel Manager

Horizon Stevedoring, Inc. (HSI) is pleased to announce the promotion of Kyle Bagnell, stevedore and crane operator to the position of Warehouse/Vessel Manager effective Monday, February 15th. Kyle joined the HSI team part-time in 2007 and became full time in 2008. During his employment, Kyle has performed many job tasks, including the operation of various powered industrial trucks, yard coordinator, utility worker and team leader. Kyle's many years of work experience in the Stevedoring Industry will help him play an integral role with the HSI team.

Kyle currently resides with his wife and two children in his home town of Atco, New Jersey.

All of us at Horizon congratulate Kyle on his promotion and wish him continued success!

## HORIZON WELCOMES NEW TEAM STEVEDORES



**Brian Heller**  
Hired February 1st



**Anthony Russino**  
Hired February 8th



**Sherman Williams**  
Hired February 8th



**Kyle Coleman**  
Hired February 18th



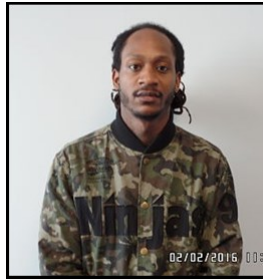
**Haleem Ealey**  
Hired February 18th



**Casey Forte**  
Hired February 18th



**Xavier Bryant**  
Hired March 2nd



**Aaron McGee**  
Hired March 2nd



**Eric Bowie**  
Hired March 22nd



**Abass Kamara**  
Hired March 22nd



**Diomedes Del Orbe**  
Hired March 22nd



**Raymond Smiley**  
Hired March 29th



**Alfred Thomas**  
Hired March 29th

*Welcome  
to the  
Team!!*

### FUN FACT

#### Did You Know?

ABS is not just an anti-lock brake system. ABS is also The American Bureau of Shipping. The job of the American Bureau of Shipping is to make sure that ships follow a standard rule of construction and maintenance. ABS' core service is the provision of classification services through the development of standards called ABS rules. These rules form the basis for assessing the design and construction of new vessels and the integrity of existing vessels and marine structures.



## Employee Birthdays



### January

Bruce Slotterback, Eugene Johnsen,  
Kevin Jackson, Gerald Liparota,  
Charles Pelzer, Stephen Cavalieri, Mike Dura,  
Tina McGriff and Alfred Thomas



### February

Allen Johnson, Lamont Whiting, Chris Schmidt,  
Sherman Williams and Abass Kamara

### March

Robert McLaughlin, Ricky Sherard, Charles Mader, III,  
Manuel Williams, James Knight, Sharon Bailey, Haleem Ealey  
and Diomedes Del Orbe

## CONTACTS

Tim Brown - President  
Tel: 215-218-3081  
tim.brown@pennci.com

Kyle Bagnell  
Warehouse/Vessel Manager  
Tel: 215-218-3071  
kyle.bagnell@pennci.com

Sharon Bailey - Terminal Manager  
Tel: 215-218-3083  
sharon.bailey@pennci.com

Michael Dura - Warehouse/Vessel  
Operations Manager  
Tel: 215-218-3082  
michael.dura@pennci.com

Charles Engel - Shipping Manager  
Tel: 215-218-3087  
charles.engel@pennci.com

Joann Knoetgen  
Warehouse Manager  
Tel: 215-218-3088  
joann.knoetgen@pennci.com

## Safety Tips for Stevedores

- Always wear prescribed personal protective equipment required for the job.
- When using a Jacob's ladder, grasp the sides, not the steps. You must maintain three-points of contact at all times.
- Don't walk or work on covered hatches.
- Stand clear of all chains, lines and cables under strain.
- Don't pass under or stand below a suspended load.
- Watch out for swinging hooks, slings, loads, and gear.
- When landing or swinging a draft, push, don't pull.
- Never reach up for a draft. Wait until it is even with your shoulders.
- Use taglines when handling large or heavy loads. Maintain an even distribution of the tagline to ensure proper tension and resistance.
- Don't work in a hold without adequate lighting.
- Never use worn out or defective gear of any kind.

## Save-The-Date

PENN Warehousing & Distribution, Inc. will host  
"Take Our Daughters and Sons to Work Day"  
on Thursday, April 28th.  
Please sign up by Thursday, April 7th.

## Transportation Worker Identification Credential (TWIC)

Keep your **TWIC** card with you at all times!!

## COMMENTS? SUGGESTIONS?

This is your Horizon River Views! If you have ideas for future articles or information you'd like to see included, please let us know. To submit ideas or suggestions, please contact Joann Knoetgen at joann.knoetgen@pennci.com